

Online Survey Management System

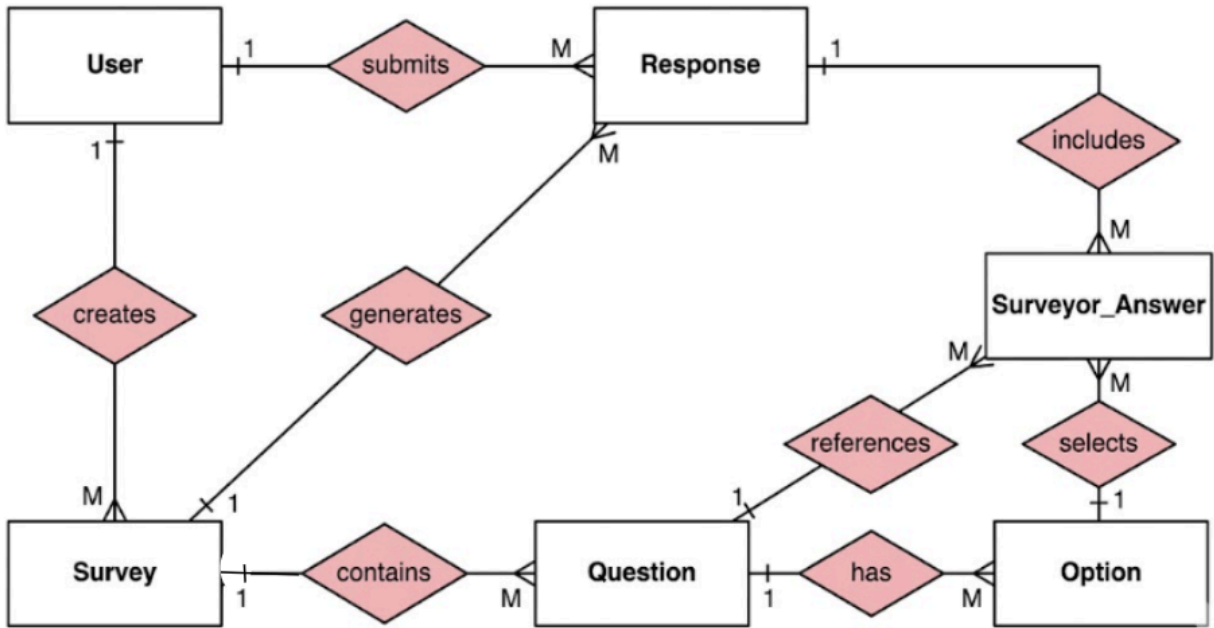
BUSINESS RULES — Online Survey System

1. A user must be registered in the system to access any survey-related functionality.
2. Each user must be assigned exactly one role: Survey Builder, Surveyor, or Survey Administrator.
3. Users must provide valid identification credentials to log into their specific interfaces.
4. The system must restrict access so that users only see the interface and features corresponding to their assigned role.
5. The Survey Administrator has the sole authority to toggle whether a survey records the identification of the Surveyors or remains anonymous.
6. A Survey Builder can create multiple surveys, but each survey must be initiated by one builder.
7. Each survey must consist of one or more question statements.
8. The system must support and allow selection between Multiple Choice (MCQ) and True/False question types.
9. Every question must have defined answer options provided by the Survey Builder.
10. A Surveyor must access the surveyor interface to view and submit answers to survey questions.
11. A surveyor can select only one option per question for both MCQ and True/False types.
12. All responses submitted by surveyors must be linked to the specific survey and question ID.
13. The system must store all submitted data to allow for later compilation and analysis.
14. A dedicated interface must be available to analyze and display the results of conducted surveys.
15. The Survey Administrator may oversee the general conduction and configuration of all surveys in the system.

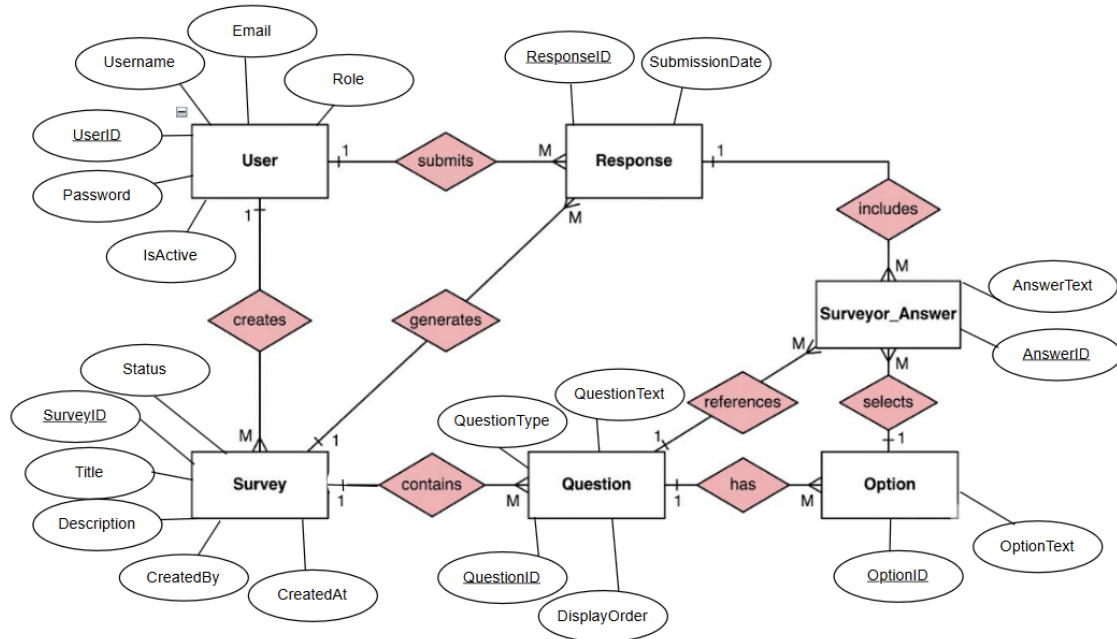
ENTERPRISE DATA MODEL

Entities involved in the enterprise.

- User
- Survey
- Question
- Response_Option
- Survey_Submission
- Surveyor_Answer



COMPLETE ER DIAGRAM WITH ATTRIBUTES



TRANSFORMING ER MODEL INTO RELATIONAL SCHEMA

User		
int	<u>UserID</u>	PK
string	Username	
string	Email	
string	password	
boolean	IsActive	
string	Role	

Survey		
int	<u>SurveyID</u>	PK
string	Title	
string	Description	
int	CreatedBy_UserID	FK
boolean	Status	
string	CreatedAt	

Question		
int	<u>QuestionID</u>	<u>PK</u>
string	QuestionText	
string	QuestionType	
int	SurveyID	FK
int	DisplayOrder	

Option		
int	<u>OptionID</u>	<u>PK</u>
int	QuestionID	FK
string	OptionText	

Response		
int	<u>ResponseID</u>	<u>PK</u>
int	SurveyID	FK
int	UserID	FK
string	SubmissionDate	

Surveyor_Answer		
int	<u>AnswerID</u>	<u>PK</u>
int	ResponseID	FK
int	QuestionID	FK
int	OptionID	FK
string	AnswerText	

SQL IMPLEMENTATION

Create Tables

```
CREATE DATABASE SurveyDB;  
GO  
USE SurveyDB;  
GO
```

1. USER TABLE

```
CREATE TABLE Users (  
    UserID INT PRIMARY KEY,  
    Username VARCHAR(50) NOT NULL,  
    Email VARCHAR(100) NOT NULL UNIQUE,  
    User_password VARCHAR(255) NOT NULL,  
    UserRole VARCHAR(20) NOT NULL CHECK (UserRole IN ('Builder', 'Surveyor',  
'Admin')),  
    IsActive Bit DEFAULT 1  
);  
GO
```

2. SURVEY TABLE

```
CREATE TABLE Survey (  
    SurveyID INT PRIMARY KEY,  
    Title VARCHAR(200) NOT NULL,  
    Description TEXT,  
    CreatedByUserID INT NOT NULL,  
    Status VARCHAR(20) NOT NULL DEFAULT 'Draft' CHECK (Status IN ('Draft', 'Published',  
'Closed')),  
    CreatedAt DATETIME DEFAULT GETDATE(),  
    FOREIGN KEY (CreatedByUserID) REFERENCES Users(UserID)  
    ON DELETE NO ACTION ON UPDATE CASCADE  
);  
GO
```

3. QUESTION TABLE

```
CREATE TABLE Question (  
    QuestionID INT PRIMARY KEY,  
    SurveyID INT NOT NULL,  
    QuestionText TEXT NOT NULL,  
    QuestionType VARCHAR(50), -- 'MCQ', 'Short Answer'  
    DisplayOrder INT,  
    FOREIGN KEY (SurveyID) REFERENCES Survey(SurveyID)  
        ON DELETE CASCADE ON UPDATE CASCADE  
);  
GO
```

4. OPTION TABLE

```
CREATE TABLE Options (  
    OptionID INT PRIMARY KEY,  
    QuestionID INT NOT NULL,  
    OptionText VARCHAR(255) NOT NULL,  
    FOREIGN KEY (QuestionID) REFERENCES Question(QuestionID)  
        ON DELETE CASCADE ON UPDATE CASCADE  
);  
GO
```

5. RESPONSE TABLE (Attempts)

```
CREATE TABLE Response (  
    ResponseID INT PRIMARY KEY,  
    SurveyID INT NOT NULL,  
    UserID INT NOT NULL, -- Surveyor ID  
    SubmissionDate DATETIME DEFAULT GETDATE(),  
    FOREIGN KEY (SurveyID) REFERENCES Survey(SurveyID),  
    FOREIGN KEY (UserID) REFERENCES Users(UserID)  
);  
GO
```

6. RESPONSE_ANSWER TABLE

```

CREATE TABLE Response_Answer (
  AnswerID INT PRIMARY KEY,
  ResponseID INT NOT NULL,
  QuestionID INT NOT NULL,
  OptionID INT NULL, -- NULL if text answer
  TextAnswer TEXT NULL, -- For open-ended questions
  FOREIGN KEY (ResponseID) REFERENCES Response(ResponseID)
  ON DELETE CASCADE,
  FOREIGN KEY (QuestionID) REFERENCES Question(QuestionID),
  FOREIGN KEY (OptionID) REFERENCES Options(OptionID),

  CONSTRAINT UQ_Response_Question UNIQUE (ResponseID, QuestionID)
);
GO

```

Insert Values

1. USER DATA

```

INSERT INTO Users VALUES (200, 'hamza_admin', 'hamza@survey.com', '123', 'Admin', 1);
INSERT INTO Users VALUES (201, 'bilal_builder', 'bilal@survey.com', '123', 'Builder', 1);
INSERT INTO Users VALUES (202, 'dania_builder', 'dania@survey.com', '123', 'Builder', 1);
INSERT INTO Users VALUES (203, 'sana_surveyor', 'sana@survey.com', '123', 'Surveyor', 1);
INSERT INTO Users VALUES (204, 'rehan_surveyor', 'rehan@survey.com', '123', 'Surveyor', 1);
INSERT INTO Users VALUES (205, 'junaid_surveyor', 'junaid@survey.com', '123', 'Surveyor',
1);
INSERT INTO Users VALUES (206, 'wania_surveyor', 'wania@survey.com', '123', 'Surveyor',
1);
INSERT INTO Users VALUES (207, 'farwa_surveyor', 'farwa@survey.com', '123', 'Surveyor', 1);
INSERT INTO Users VALUES (208, 'rohan_surveyor', 'rohan@survey.com', '123', 'Surveyor',
1);
INSERT INTO Users VALUES (209, 'shahzaib_surveyor', 'shahzaib@survey.com', '123',
'Surveyor', 1);
INSERT INTO Users VALUES (210, 'misbah_surveyor', 'misbah@survey.com', '123', 'Surveyor',
1);
GO

```

	UserID	Username	Email	User_password	UserRole	IsActive
1	200	hamza_admin	hamza@survey.com	123	Admin	1
2	201	bilal_builder	bilal@survey.com	123	Builder	1
3	202	dania_builder	dania@survey.com	123	Builder	1
4	203	sana_surveyor	sana@survey.com	123	Surveyor	1
5	204	rehan_surveyor	rehan@survey.com	123	Surveyor	1
6	205	junaid_surveyor	junaid@survey.com	123	Surveyor	1
7	206	wania_surveyor	wania@survey.com	123	Surveyor	1
8	207	farwa_surveyor	farwa@survey.com	123	Surveyor	1
9	208	rehan_surveyor	rehan@survey.com	123	Surveyor	1

2. SURVEY DATA

```
INSERT INTO Survey VALUES (300, 'Remote Work Efficiency', 'WFH productivity analysis',
201, 'Published', GETDATE());
```

```
INSERT INTO Survey VALUES (301, 'Campus Food Quality', 'Cafeteria hygiene and taste', 201,
'Published', GETDATE());
```

```
INSERT INTO Survey VALUES (302, 'Online Education Standards', 'E-learning experience',
202, 'Published', GETDATE());
```

```
INSERT INTO Survey VALUES (303, 'Office Environment', 'Workplace comfort', 201,
'Published', GETDATE());
```

```
INSERT INTO Survey VALUES (304, 'Mobile Banking UX', 'App usability feedback', 202,
'Published', GETDATE());
```

```
INSERT INTO Survey VALUES (305, 'Gym & Fitness Center', 'Equipment and trainers', 201,
'Published', GETDATE());
```

```
INSERT INTO Survey VALUES (306, 'Digital Library Usage', 'E-books accessibility', 201,
'Published', GETDATE());
```

```
INSERT INTO Survey VALUES (307, 'University Transport', 'Shuttle service review', 201,
'Published', GETDATE());
```

```
INSERT INTO Survey VALUES (308, 'Student Housing', 'Hostel living conditions', 202,
'Published', GETDATE());
```

```
INSERT INTO Survey VALUES (309, 'Annual Tech Event', 'Event coordination feedback', 202,
'Published', GETDATE());
```

```
GO
```

	SurveyID	Title	Description	CreatedByUserID	Status	CreatedAt
1	300	Remote Work Efficiency	WFH productivity analysis	201	Published	2026-05-03 19:38:04.190
2	301	Campus Food Quality	Cafeteria hygiene and taste	201	Published	2026-05-03 19:38:04.193
3	302	Online Education Standards	E-learning experience	202	Published	2026-05-03 19:38:04.193
4	303	Office Environment	Workplace comfort	201	Published	2026-05-03 19:38:04.193
5	304	Mobile Banking UX	App usability feedback	202	Published	2026-05-03 19:38:04.193
6	305	Gym & Fitness Center	Equipment and trainers	201	Published	2026-05-03 19:38:04.193
7	306	Digital Library Usage	E-books accessibility	201	Published	2026-05-03 19:38:04.193
8	307	University Transport	Shuttle service review	201	Published	2026-05-03 19:38:04.197
9	308	Student Housing	Hostel living conditions	202	Published	2026-05-03 19:38:04.197
10	309	Annual Tech Event	Event coordination feedb...	202	Published	2026-05-03 19:38:04.197

3. QUESTION DATA

- Survey 300 (Remote Work)

INSERT INTO Question VALUES (400, 300, 'Do you have a quiet workspace?', 'MCQ', 1);

INSERT INTO Question VALUES (401, 300, 'Rate your internet speed.', 'MCQ', 2);

INSERT INTO Question VALUES (402, 300, 'Hours worked per day?', 'MCQ', 3);

INSERT INTO Question VALUES (403, 300, 'Do you feel isolated?', 'MCQ', 4);

INSERT INTO Question VALUES (404, 300, 'Biggest distraction?', 'Short Answer', 5);

-- Survey 301 (Cafeteria)

INSERT INTO Question VALUES (405, 301, 'Is the food served fresh?', 'MCQ', 1);

INSERT INTO Question VALUES (406, 301, 'Pricing of meals?', 'MCQ', 2);

INSERT INTO Question VALUES (407, 301, 'Staff behavior rating?', 'MCQ', 3);

INSERT INTO Question VALUES (408, 301, 'Cleanliness of tables?', 'MCQ', 4);

INSERT INTO Question VALUES (409, 301, 'Suggest a new dish.', 'Short Answer', 5);

-- Survey 302 (Online Education)

INSERT INTO Question VALUES (410, 302, 'Are portal tools easy to use?', 'MCQ', 1);

INSERT INTO Question VALUES (411, 302, 'Quality of video lectures?', 'MCQ', 2);

INSERT INTO Question VALUES (412, 302, 'Is teacher interaction enough?', 'MCQ', 3);

INSERT INTO Question VALUES (413, 302, 'Technical issues frequency?', 'MCQ', 4);

INSERT INTO Question VALUES (414, 302, 'Main concern?', 'Short Answer', 5);

-- Survey 303: Office Environment (ID range: 415-419)

INSERT INTO Question VALUES (415, 303, 'Is the office temperature comfortable?', 'MCQ', 1);

INSERT INTO Question VALUES (416, 303, 'How would you rate the lighting?', 'MCQ', 2);

INSERT INTO Question VALUES (417, 303, 'Is the furniture ergonomic (chairs/desks)?', 'MCQ', 3);

INSERT INTO Question VALUES (418, 303, 'Noise level in the workspace?', 'MCQ', 4);

INSERT INTO Question VALUES (419, 303, 'One thing you would change in the office?', 'Short Answer', 5);

-- Survey 304: Mobile Banking UX (ID range: 420-424)

INSERT INTO Question VALUES (420, 304, 'Is the login process fast?', 'MCQ', 1);
INSERT INTO Question VALUES (421, 304, 'Can you easily find the "Transfer" button?', 'MCQ', 2);
INSERT INTO Question VALUES (422, 304, 'Rate the visual design of the app.', 'MCQ', 3);
INSERT INTO Question VALUES (423, 304, 'Did you experience any bugs?', 'MCQ', 4);
INSERT INTO Question VALUES (424, 304, 'Which feature is most confusing?', 'Short Answer', 5);
-- Survey 305: Gym & Fitness Center (ID range: 425-429)
INSERT INTO Question VALUES (425, 305, 'Is the equipment well-maintained?', 'MCQ', 1);
INSERT INTO Question VALUES (426, 305, 'Are the gym hours convenient?', 'MCQ', 2);
INSERT INTO Question VALUES (427, 305, 'Availability of drinking water?', 'MCQ', 3);
INSERT INTO Question VALUES (428, 305, 'Rate the trainer support.', 'MCQ', 4);
INSERT INTO Question VALUES (429, 305, 'Any machine you want us to add?', 'Short Answer', 5);
-- Survey 306: Digital Library Usage (ID range: 430-434)
INSERT INTO Question VALUES (430, 306, 'Is the search function accurate?', 'MCQ', 1);
INSERT INTO Question VALUES (431, 306, 'Do you find relevant e-books?', 'MCQ', 2);
INSERT INTO Question VALUES (432, 306, 'Rate the downloading speed.', 'MCQ', 3);
INSERT INTO Question VALUES (433, 306, 'Is the UI mobile-friendly?', 'MCQ', 4);
INSERT INTO Question VALUES (434, 306, 'Suggest a book title for the e-library.', 'Short Answer', 5);
-- Survey 307: University Transport (ID range: 435-439)
INSERT INTO Question VALUES (435, 307, 'Are the buses punctual?', 'MCQ', 1);
INSERT INTO Question VALUES (436, 307, 'Is the seating comfortable?', 'MCQ', 2);
INSERT INTO Question VALUES (437, 307, 'Safety measures by drivers?', 'MCQ', 3);
INSERT INTO Question VALUES (438, 307, 'Is the bus route convenient for you?', 'MCQ', 4);
INSERT INTO Question VALUES (439, 307, 'Major issue faced during commute?', 'Short Answer', 5);
-- Survey 308: Student Housing (ID range: 440-444)
INSERT INTO Question VALUES (440, 308, 'Quality of internet in hostel?', 'MCQ', 1);
INSERT INTO Question VALUES (441, 308, 'Are common rooms clean?', 'MCQ', 2);
INSERT INTO Question VALUES (442, 308, 'Laundry facility satisfaction?', 'MCQ', 3);
INSERT INTO Question VALUES (443, 308, 'Is the hostel warden cooperative?', 'MCQ', 4);
INSERT INTO Question VALUES (444, 308, 'Describe any maintenance issues.', 'Short Answer', 5);
-- Survey 309: Annual Tech Event (ID range: 445-449)
INSERT INTO Question VALUES (445, 309, 'How was the guest speaker session?', 'MCQ', 1);

```

INSERT INTO Question VALUES (446, 309, 'Was the registration smooth?', 'MCQ', 2);
INSERT INTO Question VALUES (447, 309, 'Quality of food at the event?', 'MCQ', 3);
INSERT INTO Question VALUES (448, 309, 'Was the venue spacious enough?', 'MCQ', 4);
INSERT INTO Question VALUES (449, 309, 'General feedback for organizers.', 'Short Answer',
5);

```

GO

I skipped the rest questions , because is to lengthy

	QuestionID	SurveyID	QuestionText	QuestionType	DisplayOrder
1	400	300	Do you have a quiet workspace?	MCQ	1
2	401	300	Rate your internet speed.	MCQ	2
3	402	300	Hours worked per day?	MCQ	3
4	403	300	Do you feel isolated?	MCQ	4
5	404	300	Biggest distraction?	Short Answer	5
6	405	301	Is the food served fresh?	MCQ	1
7	406	301	Pricing of meals?	MCQ	2
8	407	301	Staff behavior rating?	MCQ	3
9	408	301	Cleanliness of tables?	MCQ	4
10	409	301	Suggest a new dish.	Short Answer	5
11	410	302	Are portal tools easy to use?	MCQ	1
12	411	302	Quality of video lectures?	MCQ	2
13	412	302	Is teacher interaction enough?	MCQ	3
14	413	302	Technical issues frequency?	MCQ	4
15	414	302	Main concern?	Short Answer	5
16	415	303	Is the office temperature comfortable?	MCQ	1
17	416	303	How would you rate the lighting?	MCQ	2
18	417	303	Is the furniture ergonomic (chairs/desks)?	MCQ	3
19	418	303	Noise level in the workspace?	MCQ	4
20	419	303	One thing you would change in the office?	Short Answer	5

4. OPTION DATA

-- Survey 300: Remote Work

```

INSERT INTO Options VALUES (500, 400, 'Yes, very quiet');
INSERT INTO Options VALUES (501, 400, 'Sometimes noisy');
INSERT INTO Options VALUES (502, 400, 'No, constant distractions');
INSERT INTO Options VALUES (503, 401, 'High Speed (Fiber)');
INSERT INTO Options VALUES (504, 401, 'Average (DSL/4G)');
INSERT INTO Options VALUES (505, 401, 'Poor (Frequent lag)');
INSERT INTO Options VALUES (506, 402, 'Less than 6 hours');
INSERT INTO Options VALUES (507, 402, '8-10 hours');

```

```
INSERT INTO Options VALUES (508, 402, 'More than 10 hours');
INSERT INTO Options VALUES (509, 403, 'Yes, significantly');
INSERT INTO Options VALUES (510, 403, 'Occasionally');
INSERT INTO Options VALUES (511, 403, 'No, I feel connected');
-- Survey 301: Cafeteria
INSERT INTO Options VALUES (512, 405, 'Always Fresh');
INSERT INTO Options VALUES (513, 405, 'Sometimes Cold');
INSERT INTO Options VALUES (514, 406, 'Very Affordable');
INSERT INTO Options VALUES (515, 406, 'Fair Pricing');
INSERT INTO Options VALUES (516, 406, 'Too Expensive');
INSERT INTO Options VALUES (517, 407, 'Very Polite');
INSERT INTO Options VALUES (518, 407, 'Indifferent/Rude');
INSERT INTO Options VALUES (519, 408, 'Very Clean');
INSERT INTO Options VALUES (520, 408, 'Messy during rush hours');
-- Survey 302: Online Education
INSERT INTO Options VALUES (521, 410, 'Very Easy');
INSERT INTO Options VALUES (522, 410, 'A bit complex');
INSERT INTO Options VALUES (523, 411, 'Clear & Audible');
INSERT INTO Options VALUES (524, 411, 'Blurry/Poor Audio');
INSERT INTO Options VALUES (525, 412, 'Sufficient Interaction');
INSERT INTO Options VALUES (526, 412, 'Need more Q&A sessions');
INSERT INTO Options VALUES (527, 413, 'Rarely');
INSERT INTO Options VALUES (528, 413, 'Very Frequently');
-- Survey 303: Office Environment
INSERT INTO Options VALUES (529, 415, 'Comfortable');
INSERT INTO Options VALUES (530, 415, 'Too Cold/Hot');
INSERT INTO Options VALUES (531, 416, 'Perfectly Lit');
INSERT INTO Options VALUES (532, 416, 'Too Dim/Harsh');
INSERT INTO Options VALUES (533, 417, 'Good Support');
INSERT INTO Options VALUES (534, 417, 'Causes Discomfort');
INSERT INTO Options VALUES (535, 418, 'Quiet');
INSERT INTO Options VALUES (536, 418, 'Very Noisy/Distracting');
-- Survey 304: Mobile Banking UX
INSERT INTO Options VALUES (537, 420, 'Instant Login');
INSERT INTO Options VALUES (538, 420, 'Delayed/Slow');
INSERT INTO Options VALUES (539, 421, 'Easily Found');
```

INSERT INTO Options VALUES (540, 421, 'Hidden in Menus');
INSERT INTO Options VALUES (541, 422, 'Modern & Clean');
INSERT INTO Options VALUES (542, 422, 'Outdated UI');
INSERT INTO Options VALUES (543, 423, 'No Bugs');
INSERT INTO Options VALUES (544, 423, 'App Crashed Often');
-- Survey 305: Gym & Fitness
INSERT INTO Options VALUES (545, 425, 'Excellent Condition');
INSERT INTO Options VALUES (546, 425, 'Needs Repair');
INSERT INTO Options VALUES (547, 426, 'Very Convenient');
INSERT INTO Options VALUES (548, 426, 'Too Limited');
INSERT INTO Options VALUES (549, 427, 'Always Available');
INSERT INTO Options VALUES (550, 427, 'Often Empty');
INSERT INTO Options VALUES (551, 428, 'Very Supportive');
INSERT INTO Options VALUES (552, 428, 'Unprofessional');
-- Survey 306: Digital Library
INSERT INTO Options VALUES (553, 430, 'Always Accurate');
INSERT INTO Options VALUES (554, 430, 'Inconsistent Results');
INSERT INTO Options VALUES (555, 431, 'Always found books');
INSERT INTO Options VALUES (556, 431, 'Limited Collection');
INSERT INTO Options VALUES (557, 432, 'Fast Download');
INSERT INTO Options VALUES (558, 432, 'Extremely Slow');
INSERT INTO Options VALUES (559, 433, 'Mobile Friendly');
INSERT INTO Options VALUES (560, 433, 'Hard to use on phone');
-- Survey 307: University Transport
INSERT INTO Options VALUES (561, 435, 'Always Punctual');
INSERT INTO Options VALUES (562, 435, 'Usually Late');
INSERT INTO Options VALUES (563, 436, 'Comfortable Seats');
INSERT INTO Options VALUES (564, 436, 'Cramped Space');
INSERT INTO Options VALUES (565, 437, 'Safe Driving');
INSERT INTO Options VALUES (566, 437, 'Reckless Driving');
INSERT INTO Options VALUES (567, 438, 'Perfect Route');
INSERT INTO Options VALUES (568, 438, 'Needs more stops');
-- Survey 308: Student Housing
INSERT INTO Options VALUES (569, 440, 'Reliable WiFi');
INSERT INTO Options VALUES (570, 440, 'Frequent Disconnects');
INSERT INTO Options VALUES (571, 441, 'Very Clean');

```
INSERT INTO Options VALUES (572, 441, 'Unsanitary');
INSERT INTO Options VALUES (573, 442, 'Satisfied');
INSERT INTO Options VALUES (574, 442, 'Needs improvement');
INSERT INTO Options VALUES (575, 443, 'Very Helpful');
INSERT INTO Options VALUES (576, 443, 'Uncooperative');
-- Survey 309: Annual Tech Event
INSERT INTO Options VALUES (577, 445, 'Great Session');
INSERT INTO Options VALUES (578, 445, 'Average/Too long');
INSERT INTO Options VALUES (579, 446, 'Smooth Process');
INSERT INTO Options VALUES (580, 446, 'Too many delays');
INSERT INTO Options VALUES (581, 447, 'Delicious');
INSERT INTO Options VALUES (582, 447, 'Bad Quality');
INSERT INTO Options VALUES (583, 448, 'Spacious');
INSERT INTO Options VALUES (584, 448, 'Very Crowded');
GO
```

	OptionID	QuestionID	OptionText
1	500	400	Yes, very quiet
2	501	400	Sometimes noisy
3	502	400	No, constant distractions
4	503	401	High Speed (Fiber)
5	504	401	Average (DSL/4G)
6	505	401	Poor (Frequent lag)
7	506	402	Less than 6 hours
8	507	402	8-10 hours
9	508	402	More than 10 hours
10	509	403	Yes, significantly
11	510	403	Occasionally
12	511	403	No, I feel connected
13	512	405	Always Fresh
14	513	405	Sometimes Cold
15	514	406	Very Affordable
16	515	406	Fair Pricing
17	516	406	Too Expensive
18	517	407	Very Polite
19	518	407	Indifferent/Rude
20	519	408	Very Clean

5. RESPONSE DATA (Attempts)

```

INSERT INTO Response VALUES (600, 300, 203, GETDATE());
INSERT INTO Response VALUES (601, 301, 204, GETDATE());
INSERT INTO Response VALUES (602, 302, 205, GETDATE());
INSERT INTO Response VALUES (603, 303, 206, GETDATE());
INSERT INTO Response VALUES (604, 304, 207, GETDATE());
INSERT INTO Response VALUES (605, 305, 208, GETDATE());
INSERT INTO Response VALUES (606, 306, 209, GETDATE());
INSERT INTO Response VALUES (607, 307, 210, GETDATE());
INSERT INTO Response VALUES (608, 308, 203, GETDATE());
INSERT INTO Response VALUES (609, 309, 204, GETDATE());
GO

```

	ResponseID	SurveyID	UserID	SubmissionDate
1	600	300	203	2026-05-03 19:41:51.630
2	601	301	204	2026-05-03 19:41:51.637
3	602	302	205	2026-05-03 19:41:51.637
4	603	303	206	2026-05-03 19:41:51.637
5	604	304	207	2026-05-03 19:41:51.637
6	605	305	208	2026-05-03 19:41:51.637
7	606	306	209	2026-05-03 19:41:51.640
8	607	307	210	2026-05-03 19:41:51.640
9	608	308	203	2026-05-03 19:41:51.640
10	609	309	204	2026-05-03 19:41:51.640

6.RESPONSE_ANSWER DATA

- Answers for Response 600 (Survey 300 - Remote Work)

INSERT INTO Response_Answer VALUES (700, 600, 400, 500, NULL); -- Yes, quiet

INSERT INTO Response_Answer VALUES (701, 600, 401, 503, NULL); -- High Speed

INSERT INTO Response_Answer VALUES (702, 600, 402, 507, NULL); -- 8-10 hours

INSERT INTO Response_Answer VALUES (703, 600, 403, 510, NULL); -- Occasionally

INSERT INTO Response_Answer VALUES (704, 600, 404, NULL, 'Electricity load shedding');

-- Answers for Response 601 (Survey 301 - Cafeteria)

INSERT INTO Response_Answer VALUES (705, 601, 405, 512, NULL); -- Always Fresh

INSERT INTO Response_Answer VALUES (706, 601, 406, 515, NULL); -- Fair Pricing

INSERT INTO Response_Answer VALUES (707, 601, 407, 517, NULL); -- Very Polite

INSERT INTO Response_Answer VALUES (708, 601, 408, 520, NULL); -- Messy in rush

INSERT INTO Response_Answer VALUES (709, 601, 409, NULL, 'Fresh fruit juices');

-- Answers for Response 602 (Survey 302 - Online Education)

INSERT INTO Response_Answer VALUES (710, 602, 410, 521, NULL); -- Very Easy

INSERT INTO Response_Answer VALUES (711, 602, 411, 523, NULL); -- Clear Audio

INSERT INTO Response_Answer VALUES (712, 602, 412, 526, NULL); -- Need more Q&A

INSERT INTO Response_Answer VALUES (713, 602, 413, 527, NULL); -- Rarely

INSERT INTO Response_Answer VALUES (714, 602, 414, NULL, 'Unstable LMS portal');

-- Answers for Response 603 (Survey 303 - Office Environment)

INSERT INTO Response_Answer VALUES (715, 603, 415, 529, NULL); -- Comfortable
INSERT INTO Response_Answer VALUES (716, 603, 416, 531, NULL); -- Perfectly Lit
INSERT INTO Response_Answer VALUES (717, 603, 417, 533, NULL); -- Good Support
INSERT INTO Response_Answer VALUES (718, 603, 418, 536, NULL); -- Very Noisy
INSERT INTO Response_Answer VALUES (719, 603, 419, NULL, 'More indoor plants');

-- Answers for Response 604 (Survey 304 - Mobile Banking)

INSERT INTO Response_Answer VALUES (720, 604, 420, 537, NULL); -- Instant Login
INSERT INTO Response_Answer VALUES (721, 604, 421, 539, NULL); -- Easily Found
INSERT INTO Response_Answer VALUES (722, 604, 422, 541, NULL); -- Modern UI
INSERT INTO Response_Answer VALUES (723, 604, 423, 543, NULL); -- No Bugs
INSERT INTO Response_Answer VALUES (724, 604, 424, NULL, 'Bill payment history');

-- Answers for Response 607 (Survey 307 - Transport)

INSERT INTO Response_Answer VALUES (725, 607, 435, 562, NULL); -- Usually Late
INSERT INTO Response_Answer VALUES (726, 607, 436, 564, NULL); -- Cramped Space
INSERT INTO Response_Answer VALUES (727, 607, 437, 565, NULL); -- Safe Driving
INSERT INTO Response_Answer VALUES (728, 607, 438, 568, NULL); -- Needs more stops
INSERT INTO Response_Answer VALUES (729, 607, 439, NULL, 'Old AC units');

-- Answers for Response 605 (Survey 305 - Gym & Fitness)

INSERT INTO Response_Answer VALUES (730, 605, 425, 545, NULL); -- Excellent Condition
INSERT INTO Response_Answer VALUES (731, 605, 426, 547, NULL); -- Very Convenient
INSERT INTO Response_Answer VALUES (732, 605, 427, 549, NULL); -- Always Available
INSERT INTO Response_Answer VALUES (733, 605, 428, 551, NULL); -- Very Supportive
INSERT INTO Response_Answer VALUES (734, 605, 429, NULL, 'Need more Bench Press racks');

-- Answers for Response 606 (Survey 306 - Digital Library)

INSERT INTO Response_Answer VALUES (735, 606, 430, 553, NULL); -- Always Accurate
INSERT INTO Response_Answer VALUES (736, 606, 431, 555, NULL); -- Always found books
INSERT INTO Response_Answer VALUES (737, 606, 432, 557, NULL); -- Fast Download
INSERT INTO Response_Answer VALUES (738, 606, 433, 559, NULL); -- Mobile Friendly

```
INSERT INTO Response_Answer VALUES (739, 606, 434, NULL, 'Clean Code by Robert Martin');
```

```
-- Answers for Response 608 (Survey 308 - Student Housing)
```

```
INSERT INTO Response_Answer VALUES (740, 608, 440, 570, NULL); -- Frequent Disconnects
```

```
INSERT INTO Response_Answer VALUES (741, 608, 441, 571, NULL); -- Very Clean
```

```
INSERT INTO Response_Answer VALUES (742, 608, 442, 573, NULL); -- Satisfied
```

```
INSERT INTO Response_Answer VALUES (743, 608, 443, 575, NULL); -- Very Helpful
```

```
INSERT INTO Response_Answer VALUES (744, 608, 444, NULL, 'Room 302 fan making noise');
```

```
-- Answers for Response 609 (Survey 309 - Annual Tech Event)
```

```
INSERT INTO Response_Answer VALUES (745, 609, 445, 577, NULL); -- Great Session
```

```
INSERT INTO Response_Answer VALUES (746, 609, 446, 579, NULL); -- Smooth Process
```

```
INSERT INTO Response_Answer VALUES (747, 609, 447, 581, NULL); -- Delicious
```

```
INSERT INTO Response_Answer VALUES (748, 609, 448, 583, NULL); -- Spacious
```

```
INSERT INTO Response_Answer VALUES (749, 609, 449, NULL, 'More hands-on workshops next time');
```

```
GO
```

	AnswerID	ResponseID	QuestionID	OptionID	TextAnswer
1	700	600	400	500	NULL
2	701	600	401	503	NULL
3	702	600	402	507	NULL
4	703	600	403	510	NULL
5	704	600	404	NULL	Electricity load shedding
6	705	601	405	512	NULL
7	706	601	406	515	NULL
8	707	601	407	517	NULL
9	708	601	408	520	NULL
10	709	601	409	NULL	Fresh fruit juices
11	710	602	410	521	NULL
12	711	602	411	523	NULL
13	712	602	412	526	NULL
14	713	602	413	527	NULL
15	714	602	414	NULL	Unstable LMS portal
16	715	603	415	529	NULL
17	716	603	416	531	NULL
18	717	603	417	533	NULL
19	718	603	418	536	NULL
20	719	603	419	NULL	More indoor plants

HTML CODE FILES

Login.aspx

```

<%@ Page Language="VB" AutoEventWireup="false" CodeFile="Login.aspx.vb"
Inherits="Login" %>
<!DOCTYPE html>
<html>
<head runat="server">
  <title>Login - Survey System</title>
  <link href="style.css" rel="stylesheet"/>
</head>
<body>
  <form id="form1" runat="server">
    <div class="login-card">

```

```

<div class="login-header">SURVEY SYSTEM LOGIN</div>
<div style="padding:20px;">
  <asp:TextBox ID="txtEmail" runat="server" CssClass="login-input"
placeholder="Email"></asp:TextBox>
  <asp:TextBox ID="txtPassword" runat="server" CssClass="login-input"
TextMode="Password" placeholder="Password"></asp:TextBox>
  <asp:Button ID="btnlogin" runat="server" Text="LOGIN" CssClass="btn-login"
OnClick="btnlogin_Click" Width="100%" />
  <br /><br />
  <asp:Label ID="lblMsg" runat="server" ForeColor="Red"
Font-Bold="true"></asp:Label>
</div>
</div>
</form>
</body>
</html>

```

[login.aspx.vb](#)

```

Imports System.Data.SqlClient
Imports System.Configuration

```

```

Partial Class Login
  Inherits System.Web.UI.Page

```

```

  Protected Sub btnlogin_Click(sender As Object, e As EventArgs)

```

```

    Dim connStr As String =
ConfigurationManager.ConnectionStrings("SurveyDBConn").ConnectionString

```

```

    Using conn As New SqlConnection(connStr)

```

```

        Dim query As String = "SELECT UserID, UserRole, Username FROM Users WHERE
Email=@email AND User_password=@pass AND IsActive=1"

```

```

        Dim cmd As New SqlCommand(query, conn)
        cmd.Parameters.AddWithValue("@email", txtEmail.Text.Trim())
        cmd.Parameters.AddWithValue("@pass", txtPassword.Text.Trim())

```

```

        conn.Open()
        Dim reader As SqlDataReader = cmd.ExecuteReader()

```

```

        If reader.Read() Then

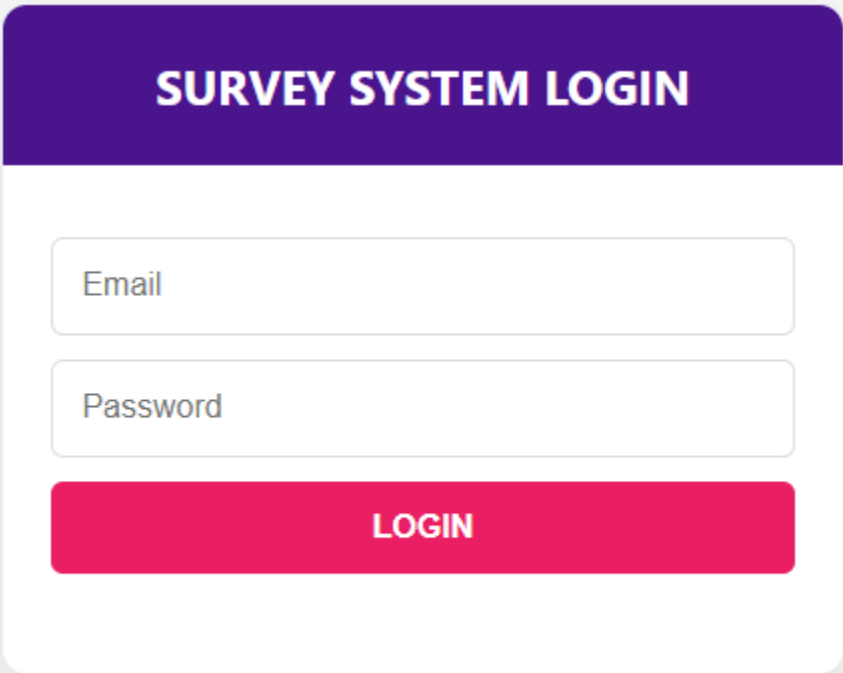
```

```
Session("UserID") = reader("UserID").ToString()  
Session("Role") = reader("UserRole").ToString()  
Session("UserName") = reader("Username").ToString()
```

```
Select Case reader("UserRole").ToString()  
    Case "Admin"  
        Response.Redirect("Admin.aspx")  
    Case "Builder"  
        Response.Redirect("Builder.aspx")  
    Case "Surveyor"  
        Response.Redirect("Surveyor.aspx")  
End Select  
Else  
    lblMsg.Text = "Invalid Login Details!"  
End If
```

```
End Using  
End Sub
```

```
End Class
```



The image shows a login form for a survey system. It features a purple header with the text "SURVEY SYSTEM LOGIN" in white. Below the header are two input fields: "Email" and "Password". At the bottom of the form is a red button labeled "LOGIN".

Admin.aspx

```
<%@ Page Language="VB" AutoEventWireup="false" CodeFile="Admin.aspx.vb"
Inherits="Admin" %>
<!DOCTYPE html>
<html>
<head runat="server">
  <title>Admin Panel - Survey System</title>
  <link href="style.css" rel="stylesheet" />
</head>
<body>
  <form id="form1" runat="server">
    <div class="admin-header">ADMIN CONTROL PANEL</div>

    <div class="sidebar">
      <asp:LinkButton ID="lnkDashboard" runat="server"
OnClick="ShowDashboard">Dashboard Stats</asp:LinkButton>
      <asp:LinkButton ID="lnkUsers" runat="server" OnClick="ShowUsers">User
Management</asp:LinkButton>
      <asp:LinkButton ID="lnkSurveys" runat="server" OnClick="ShowSurveys">Survey
Topics</asp:LinkButton>
      <asp:LinkButton ID="lnkResponses" runat="server" OnClick="ShowResponses">Survey
Responses</asp:LinkButton>
      <asp:LinkButton ID="btnLogout" runat="server" CssClass="logout"
OnClick="btnLogout_Click">Logout</asp:LinkButton>
    </div>

    <div class="main-content">
      <asp:Label ID="lblGlobalMsg" runat="server"></asp:Label>

      <asp:MultiView ID="AdminMultiView" runat="server" ActiveViewIndex="0">

        <asp:View ID="ViewStats" runat="server">
          <div class="stats-container">
            <div class="stat-card"><h2>Total Surveys</h2><asp:Label ID="lblTotalSurveys"
runat="server" Font-Size="XX-Large">0</asp:Label></div>
            <div class="stat-card"><h2>Surveyors</h2><asp:Label ID="lblTotalSurveyors"
runat="server" Font-Size="XX-Large">0</asp:Label></div>
            <div class="stat-card"><h2>Total Responses</h2><asp:Label
ID="lblTotalResponses" runat="server" Font-Size="XX-Large">0</asp:Label></div>
          </div>
        </asp:View>

        <asp:View ID="ViewUsers" runat="server">
```

```

        <div class="card-pink" style="padding:20px; border-radius:10px;
margin-bottom:20px; color:white;">
            <h3>Add New User</h3>
            <asp:TextBox ID="txtUserID" runat="server" placeholder="ID"
CssClass="login-input" Width="10%"></asp:TextBox>
            <asp:TextBox ID="txtUsername" runat="server" placeholder="Name"
CssClass="login-input" Width="20%"></asp:TextBox>
            <asp:TextBox ID="txtEmail" runat="server" placeholder="Email"
CssClass="login-input" Width="20%"></asp:TextBox>
            <asp:TextBox ID="txtPass" runat="server" placeholder="Password"
CssClass="login-input" Width="15%"></asp:TextBox>
            <asp:DropDownList ID="ddlRole" runat="server" CssClass="login-input"
Width="15%">
                <asp:ListItem>Builder</asp:ListItem>
                <asp:ListItem>Surveyor</asp:ListItem>
                <asp:ListItem>Admin</asp:ListItem>
            </asp:DropDownList>
            <asp:Button ID="btnAddUser" runat="server" Text="Save"
OnClick="btnAddUser_Click" CssClass="btn-login" style="width:80px;" />
        </div>
        <asp:GridView ID="gvUsers" runat="server" CssClass="report-grid"
AutoGenerateColumns="False" DataKeyNames="UserID"
OnRowDeleting="gvUsers_RowDeleting" Width="100%">
            <Columns>
                <asp:BoundField DataField="UserID" HeaderText="ID" />
                <asp:BoundField DataField="Username" HeaderText="Name" />
                <asp:BoundField DataField="Email" HeaderText="Email" />
                <asp:BoundField DataField="UserRole" HeaderText="Role" />
                <asp:TemplateField HeaderText="Action">
                    <ItemTemplate>
                        <asp:LinkButton ID="btnDelUser" runat="server"
CommandName="Delete" Text="Delete" OnClientClick="return confirm('Delete this user and all
their survey data permanently?');" ForeColor="Red" />
                    </ItemTemplate>
                </asp:TemplateField>
            </Columns>
        </asp:GridView>
    </asp:View>

    <!-- Survey Topics View -->
    <asp:View ID="ViewSurveys" runat="server">
        <div class="card-pink" style="padding:20px; border-radius:10px; margin-bottom:20px;
color:white;">
            <h3>Create New Survey</h3>

```

```

<div style="display: grid; grid-template-columns: 1fr 1fr; gap: 10px;">
  <asp:TextBox ID="txtSurveyTitle" runat="server" placeholder="Survey Title"
  CssClass="login-input"></asp:TextBox>
  <!-- Builder Selection DropDown -->
  <div style="grid-column: span 2;">
    <label style="display:block; margin-bottom:5px;">Assign to Builder:</label>
    <asp:DropDownList ID="ddlBuilders" runat="server" CssClass="login-input"
  Width="100%" style="background: white; color: black;"></asp:DropDownList>
  </div>

  <asp:TextBox ID="txtDescription" runat="server" placeholder="Brief Description"
  CssClass="login-input" TextMode="MultiLine" Rows="2" style="grid-column: span
  2;"></asp:TextBox>
  </div>
  <asp:Button ID="btnAddSurvey" runat="server" Text="Create Draft Survey"
  OnClick="btnAddSurvey_Click" CssClass="btn-login" style="margin-top:10px; width:200px;" />
  </div>

<div class="grid-title">All Surveys (Drafts & Published)</div>
<asp:GridView ID="gvSurveys" runat="server" CssClass="report-grid"
AutoGenerateColumns="False" DataKeyNames="SurveyID"
OnRowDeleting="gvSurveys_RowDeleting" Width="100%">
  <Columns>
    <asp:BoundField DataField="SurveyID" HeaderText="ID" />
    <asp:BoundField DataField="Title" HeaderText="Title" />
    <asp:BoundField DataField="Description" HeaderText="Description" />
    <asp:BoundField DataField="Username" HeaderText="Assigned Builder" />
    <asp:BoundField DataField="Status" HeaderText="Status" />
    <asp:BoundField DataField="CreatedAt" HeaderText="Date Created"
  DataFormatString="{0:dd/MM/yyyy}" />
    <asp:TemplateField HeaderText="Action">
      <ItemTemplate>
        <asp:LinkButton ID="btnDelete" runat="server" CommandName="Delete"
  Text="Delete" OnClientClick="return confirm('Delete this survey?');" ForeColor="Red" />
      </ItemTemplate>
    </asp:TemplateField>
  </Columns>
</asp:GridView>
</asp:View>

  <asp:View ID="ViewResponses" runat="server">
  <div class="grid-title">SURVEY ANALYSIS DASHBOARD</div>

  <div class="card-pink" style="padding:15px; margin-bottom:20px;">

```

```

        <label>Select Survey:</label>
        <asp:DropDownList ID="ddlSelectSurvey" runat="server" CssClass="login-input"
            AutoPostBack="true"
OnSelectedIndexChanged="ddlSelectSurvey_SelectedIndexChanged" Width="300px">
        </asp:DropDownList>
    </div>

    <h3 style="color:#4a148c;">1. Individual Responses (Detail)</h3>
    <asp:GridView ID="gvDetailResponses" runat="server" CssClass="report-grid"
Width="100%"></asp:GridView>

    <br /><br />

    <h3 style="color:#4a148c;">2. MCQ Analysis (Stats)</h3>
    <asp:GridView ID="gvAnalysis" runat="server" CssClass="report-grid"
Width="100%"></asp:GridView>
</asp:View>

    </asp:MultiView>
</div>
</form>
</body>
</html>

```

[Admin.aspx.vb](#)

```

Imports System.Data
Imports System.Data.SqlClient

```

```

Partial Class Admin
    Inherits System.Web.UI.Page

```

```

    Dim connStr As String =
ConfigurationManager.ConnectionStrings("SurveyDBConn").ConnectionString
    Protected Sub Page_Load(sender As Object, e As EventArgs) Handles Me.Load
        If Session("Role") Is Nothing OrElse Session("Role").ToString() <> "Admin" Then
            Response.Redirect("Login.aspx")
        End If

        If Not IsPostBack Then
            LoadStats()
        End If
    End Sub

```

'NAVIGATION (MULTIVIEW CONTROLS)

Protected Sub ShowDashboard(s As Object, e As EventArgs)

 AdminMultiView.ActiveViewIndex = 0

 LoadStats()

End Sub

Protected Sub ShowUsers(s As Object, e As EventArgs)

 AdminMultiView.ActiveViewIndex = 1

 LoadUsers()

End Sub

Protected Sub ShowSurveys(s As Object, e As EventArgs)

 AdminMultiView.ActiveViewIndex = 2

 LoadSurveys()

 LoadBuilders()

End Sub

Protected Sub ShowResponses(sender As Object, e As EventArgs)

 AdminMultiView.ActiveViewIndex = 3

 LoadSurveyDropdown()

End Sub

' USER MANAGEMENT

Sub LoadUsers()

 Using conn As New SqlConnection(connStr)

 Dim da As New SqlDataAdapter("SELECT UserID, Username, Email, UserRole FROM Users", conn)

 Dim dt As New DataTable()

 da.Fill(dt)

 gvUsers.DataSource = dt

 gvUsers.DataBind()

 End Using

End Sub

Protected Sub btnAddUser_Click(sender As Object, e As EventArgs)

 If txtUserID.Text = "" Or txtUsername.Text = "" Or txtEmail.Text = "" Then

 ShowMsg("All fields are required!", True)

 Return

 End If

 Using conn As New SqlConnection(connStr)

 Try

 conn.Open()

```

' Check Existence
Dim check = New SqlCommand("SELECT COUNT(*) FROM Users WHERE
UserID=@id OR Email=@em", conn)
check.Parameters.AddWithValue("@id", txtUserID.Text)
check.Parameters.AddWithValue("@em", txtEmail.Text)

If Convert.ToInt32(check.ExecuteScalar()) > 0 Then
    ShowMsg("User ID or Email already exists!", True)
    Return
End If

' Insert
Dim cmd As New SqlCommand("INSERT INTO Users (UserID, Username, Email,
User_password, UserRole) VALUES (@id, @n, @e, @p, @r)", conn)
cmd.Parameters.AddWithValue("@id", txtUserID.Text)
cmd.Parameters.AddWithValue("@n", txtUsername.Text)
cmd.Parameters.AddWithValue("@e", txtEmail.Text)
cmd.Parameters.AddWithValue("@p", txtPass.Text)
cmd.Parameters.AddWithValue("@r", ddlRole.SelectedValue)
cmd.ExecuteNonQuery()

ShowMsg("User added successfully!", False)
ClearUserFields()
LoadUsers()
LoadStats()
Catch ex As Exception
    ShowMsg("Error: " & ex.Message, True)
End Try
End Using
End Sub

Protected Sub gvUsers_RowDeleting(sender As Object, e As GridViewDeleteEventArgs)
Dim uid As Integer = Convert.ToInt32(gvUsers.DataKeys(e.RowIndex).Value)
Using conn As New SqlConnection(connStr)
    conn.Open()
    Dim trans As SqlTransaction = conn.BeginTransaction()
    Try
        ' Delete chain: Answers -> Responses -> User
        Dim cmd1 As New SqlCommand("DELETE FROM Response_Answer WHERE
ResponseID IN (SELECT ResponseID FROM Response WHERE UserID=@id)", conn, trans)
        cmd1.Parameters.AddWithValue("@id", uid)
        cmd1.ExecuteNonQuery()
    
```

```
Dim cmd2 As New SqlCommand("DELETE FROM Response WHERE UserID=@id",  
conn, trans)  
cmd2.Parameters.AddWithValue("@id", uid)  
cmd2.ExecuteNonQuery()
```

```
Dim cmd3 As New SqlCommand("DELETE FROM Users WHERE UserID=@id",  
conn, trans)  
cmd3.Parameters.AddWithValue("@id", uid)  
cmd3.ExecuteNonQuery()
```

```
trans.Commit()  
ShowMsg("User deleted successfully.", False)  
Catch ex As Exception  
trans.Rollback()  
ShowMsg("Delete Error: " & ex.Message, True)  
End Try  
End Using  
LoadUsers()  
LoadStats()  
End Sub
```

'SURVEY MANAGEMENT

```
Sub LoadSurveys()  
Using conn As New SqlConnection(connStr)  
Dim query As String = "SELECT S.SurveyID, S.Title, S.Description, U.Username,  
S.Status, S.CreatedAt " &  
"FROM Survey S " &  
"LEFT JOIN Users U ON S.CreatedByUserID = U.UserID"  
Dim da As New SqlDataAdapter(query, conn)  
Dim dt As New DataTable()  
da.Fill(dt)  
gvSurveys.DataSource = dt  
gvSurveys.DataBind()  
End Using  
End Sub
```

Protected Sub btnAddSurvey_Click(sender As Object, e As EventArgs)

```
If String.IsNullOrEmpty(txtSurveyTitle.Text) Or ddlBuilders.SelectedValue = "0" Then  
ShowMsg("Title and Builder selection are required!", True)  
Return  
End If
```

```
Using conn As New SqlConnection(connStr)  
Try
```

```

    conn.Open()
    ' Duplicate Title Check
    Dim checkCmd = New SqlCommand("SELECT COUNT(*) FROM Survey WHERE
Title=@t", conn)
    checkCmd.Parameters.AddWithValue("@t", txtSurveyTitle.Text.Trim())
    If Convert.ToInt32(checkCmd.ExecuteScalar()) > 0 Then
        ShowMsg("This survey title already exists!", True)
        Return
    End If

    Dim nextId = Convert.ToInt32(New SqlCommand("SELECT ISNULL(MAX(SurveyID),
0) + 1 FROM Survey", conn).ExecuteScalar())
    Dim query As String = "INSERT INTO Survey (SurveyID, Title, Description,
CreatedByUserID, Status, CreatedAt) VALUES (@id, @t, @desc, @u, 'Draft', GETDATE())"

    Dim cmd = New SqlCommand(query, conn)
    cmd.Parameters.AddWithValue("@id", nextId)
    cmd.Parameters.AddWithValue("@t", txtSurveyTitle.Text.Trim())
    cmd.Parameters.AddWithValue("@desc", txtDescription.Text.Trim())
    cmd.Parameters.AddWithValue("@u", ddlBuilders.SelectedValue)
    cmd.ExecuteNonQuery()

    ShowMsg("New survey created!", False)
    ClearSurveyFields()
    LoadSurveys()
    LoadStats()
Catch ex As Exception
    ShowMsg("Error: " & ex.Message, True)
End Try
End Using
End Sub

Protected Sub gvSurveys_RowDeleting(sender As Object, e As GridViewDeleteEventArgs)
    Dim sid As Integer = Convert.ToInt32(gvSurveys.DataKeys(e.RowIndex).Value)
    Using conn As New SqlConnection(connStr)
        Try
            conn.Open()
            Dim cmd As New SqlCommand("DELETE FROM Survey WHERE SurveyID=@id",
conn)
            cmd.Parameters.AddWithValue("@id", sid)
            cmd.ExecuteNonQuery()
            ShowMsg("Survey deleted.", False)
        Catch ex As Exception
            ShowMsg("Cannot delete: Survey has active responses.", True)

```

```
End Try
End Using
LoadSurveys()
LoadStats()
End Sub
```

```
' RESPONSE ANALYSIS & REPORTS
```

```
Sub LoadSurveyDropdown()
    Using conn As New SqlConnection(connStr)
        Dim da As New SqlDataAdapter("SELECT SurveyID, Title FROM Survey", conn)
        Dim dt As New DataTable()
        da.Fill(dt)
        ddlSelectSurvey.DataSource = dt
        ddlSelectSurvey.DataTextField = "Title"
        ddlSelectSurvey.DataValueField = "SurveyID"
        ddlSelectSurvey.DataBind()
        ddlSelectSurvey.Items.Insert(0, New ListItem("-- Choose Survey --", "0"))
    End Using
End Sub
```

```
Protected Sub ddlSelectSurvey_SelectedIndexChanged(sender As Object, e As EventArgs)
```

```
    Dim sid As String = ddlSelectSurvey.SelectedValue
    If sid <> "0" Then
        LoadDetailedResponses(sid)
        LoadAnalysisStats(sid)
    End If
End Sub
```

```
Sub LoadDetailedResponses(surveyID As String)
```

```
    Using conn As New SqlConnection(connStr)
        Dim query As String = "SELECT U.Username AS [User], Q.QuestionText AS [Question],
" &
        "ISNULL(O.OptionText, RA.TextAnswer) AS [Answer] " &
        "FROM Response_Answer RA " &
        "JOIN Question Q ON RA.QuestionID = Q.QuestionID " &
        "JOIN Response R ON RA.ResponseID = R.ResponseID " &
        "JOIN Users U ON R.UserID = U.UserID " &
        "LEFT JOIN Options O ON RA.OptionID = O.OptionID " &
        "WHERE Q.SurveyID = @sid"
```

```
    Dim da As New SqlDataAdapter(query, conn)
    da.SelectCommand.Parameters.AddWithValue("@sid", surveyID)
    Dim dt As New DataTable()
    da.Fill(dt)
```

```

        gvDetailResponses.DataSource = dt
        gvDetailResponses.DataBind()
    End Using
End Sub

Sub LoadAnalysisStats(surveyID As String)
    Using conn As New SqlConnection(connStr)
        Dim query As String = "SELECT Q.QuestionText, O.OptionText, COUNT(RA.AnswerID)
AS Total " &
        "FROM Options O " &
        "JOIN Question Q ON O.QuestionID = Q.QuestionID " &
        "LEFT JOIN Response_Answer RA ON O.OptionID = RA.OptionID " &
        "WHERE Q.SurveyID = @sid " &
        "GROUP BY Q.QuestionText, O.OptionText"

        Dim da As New SqlDataAdapter(query, conn)
        da.SelectCommand.Parameters.AddWithValue("@sid", surveyID)
        Dim dt As New DataTable()
        da.Fill(dt)

        gvAnalysis.DataSource = dt
        gvAnalysis.DataBind()
    End Using
End Sub

Sub LoadStats()
    Using conn As New SqlConnection(connStr)
        Try
            conn.Open()
            lblTotalSurveys.Text = New SqlCommand("SELECT COUNT(*) FROM Survey",
conn).ExecuteScalar().ToString()
            lblTotalSurveyors.Text = New SqlCommand("SELECT COUNT(*) FROM Users
WHERE UserRole='Surveyor'", conn).ExecuteScalar().ToString()
            lblTotalResponses.Text = New SqlCommand("SELECT COUNT(*) FROM Response",
conn).ExecuteScalar().ToString()
        Catch : End Try
    End Using
End Sub

Sub LoadBuilders()
    Using conn As New SqlConnection(connStr)
        Dim cmd As New SqlCommand("SELECT UserID, Username FROM Users WHERE
UserRole='Builder'", conn)

```

```

        conn.Open()
        ddlBuilders.DataSource = cmd.ExecuteReader()
        ddlBuilders.DataTextField = "Username"
        ddlBuilders.DataValueField = "UserID"
        ddlBuilders.DataBind()
        ddlBuilders.Items.Insert(0, New ListItem("-- Select Builder --", "0"))
    End Using
End Sub

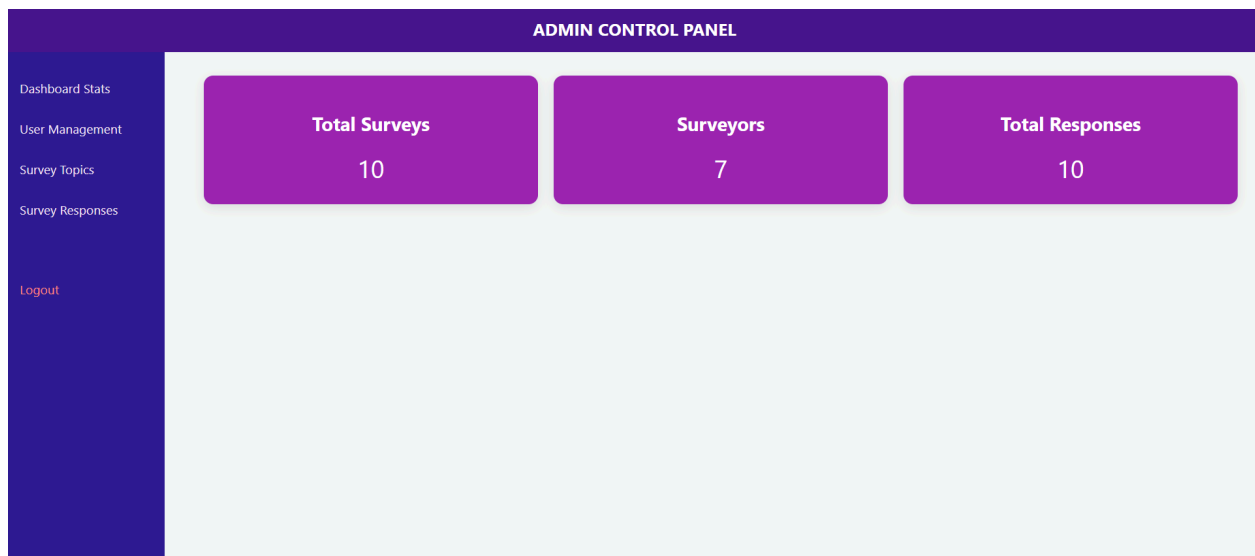
Sub ShowMsg(text As String, isError As Boolean)
    lblGlobalMsg.Text = text
    lblGlobalMsg.CssClass = If(isError, "error-msg", "success-msg")
End Sub

Sub ClearUserFields()
    txtUserID.Text = "" : txtUsername.Text = "" : txtEmail.Text = "" : txtPass.Text = ""
End Sub

Sub ClearSurveyFields()
    txtSurveyTitle.Text = "" : txtDescription.Text = "" : ddlBuilders.SelectedIndex = 0
End Sub

Protected Sub btnLogout_Click(sender As Object, e As EventArgs)
    Session.Abandon()
    Response.Redirect("Login.aspx")
End Sub
End Class

```



Surveyor.aspx

```
<%@ Page Language="VB" AutoEventWireup="false" CodeFile="Surveyor.aspx.vb"
Inherits="Surveyor" %>
<!DOCTYPE html>
<html>
<head runat="server">
  <title>Surveyor Dashboard</title>
  <link href="style.css" rel="stylesheet" />
</head>
<body>
  <form id="form1" runat="server">
    <div class="survey-header">SURVEYOR PANEL</div>
    <div class="welcome-bar">
      WELCOME, <asp:Label ID="lblUser" runat="server"></asp:Label>
      <asp:LinkButton ID="lnkLogout" runat="server" OnClick="lnkLogout_Click"
      CssClass="logout-btn">Logout</asp:LinkButton>
    </div>

    <div class="main-content" style="padding: 20px;">
      <div class="grid-title" style="background:#9c27b0; color:white; padding:10px;
border-radius:5px 5px 0 0;">
        Available Surveys to Participate
      </div>
      <asp:GridView ID="gvSurveys" runat="server" AutoGenerateColumns="False"
      CssClass="report-grid" OnRowCommand="gvSurveys_RowCommand" Width="100%">
        <Columns>
          <asp:BoundField DataField="SurveyID" HeaderText="ID" ItemStyle-Width="50px"
/>
          <asp:BoundField DataField="Title" HeaderText="Survey Title" />
          <asp:BoundField DataField="Description" HeaderText="Description" />
          <asp:TemplateField HeaderText="Action">
            <ItemTemplate>
              <asp:Button ID="btnTake" runat="server" Text="Start Survey"
      CommandName="Start" CommandArgument='<%=# Eval("SurveyID") %>' CssClass="btn-login"
      style="width:120px; height:35px; font-size:12px;" />
            </ItemTemplate>
          </asp:TemplateField>
        </Columns>
      </asp:GridView>

      <br /><br />

```

```
<div class="grid-title" style="background:#4caf50; color:white; padding:10px; border-radius:5px 5px 0 0;">
    Your Survey History
</div>
```

```
<asp:GridView ID="gvHistory" runat="server" AutoGenerateColumns="False"
    CssClass="report-grid" Width="100%">
    <Columns>
        <asp:BoundField DataField="SurveyID" HeaderText="ID" />
        <asp:BoundField DataField="Title" HeaderText="Survey Title" />
        <asp:BoundField DataField="SubmissionDate" HeaderText="Submitted On"
    DataFormatString="{0:dd/MM/yyyy}" />
    </Columns>
</asp:GridView>
```

```
</div>
</form>
</body>
</html>
```

[Surveyor.aspx.vb](#)

```
Imports System.Data
Imports System.Data.SqlClient
```

```
Partial Class Surveyor
    Inherits System.Web.UI.Page
```

```
Protected Sub Page_Load(sender As Object, e As EventArgs) Handles Me.Load
    If Session("Role") Is Nothing OrElse Session("Role").ToString() <> "Surveyor" Then
        Response.Redirect("Login.aspx")
    End If
```

```
    lblUser.Text = Session("Username").ToString()
    If Not IsPostBack Then
        LoadSurveys()
        LoadHistory()
```

```
    End If
End Sub
```

```
Sub LoadSurveys()
```

```

Dim connStr As String =
ConfigurationManager.ConnectionStrings("SurveyDBConn").ConnectionString
Using conn As New SqlConnection(connStr)
    Dim cmd As New SqlDataAdapter("SELECT SurveyID, Title, Description FROM Survey
WHERE Status='Published'AND SurveyID NOT IN (SELECT SurveyID FROM Response
WHERE UserID=@uid)", conn)
    cmd.SelectCommand.Parameters.AddWithValue("@uid", Session("UserID"))
    Dim dt As New DataTable()
    cmd.Fill(dt)
    gvSurveys.DataSource = dt
    gvSurveys.DataBind()
End Using
End Sub

```

```

Protected Sub gvSurveys_RowCommand(sender As Object, e As
GridViewCommandEventArgs)
    If e.CommandName = "Start" Then
        Session("ActiveSurveyID") = e.CommandArgument
        Response.Redirect("TakeSurvey.aspx")
    End If
End Sub

```

```

Sub LoadHistory()
    Dim connStr As String =
ConfigurationManager.ConnectionStrings("SurveyDBConn").ConnectionString

    Using conn As New SqlConnection(connStr)

        Dim query As String = "SELECT S.SurveyID, S.Title, R.SubmissionDate FROM
Response R JOIN Survey S ON R.SurveyID = S.SurveyID WHERE R.UserID = @uid ORDER
BY R.SubmissionDate DESC "
        Dim da As New SqlDataAdapter(query, conn)
        da.SelectCommand.Parameters.AddWithValue("@uid", Session("UserID"))

        Dim dt As New DataTable()
        da.Fill(dt)

        gvHistory.DataSource = dt
        gvHistory.DataBind()
    End Using
End Sub

```

```

Protected Sub InkLogout_Click(sender As Object, e As EventArgs)

```

```

Session.Abandon()
Response.Redirect("Login.aspx")
End Sub
End Class

```

SURVEYOR PANEL			
WELCOME, junaaid_surveyor Logout			
Available Surveys to Participate			
ID	Survey Title	Description	Action
300	Remote Work Efficiency	WFH productivity analysis	Start Survey
301	Campus Food Quality	Cafeteria hygiene and taste	Start Survey
303	Office Environment	Workplace comfort	Start Survey
304	Mobile Banking UX	App usability feedback	Start Survey
305	Gym & Fitness Center	Equipment and trainers	Start Survey
306	Digital Library Usage	E-books accessibility	Start Survey
307	University Transport	Shuttle service review	Start Survey
308	Student Housing	Hostel living conditions	Start Survey
309	Annual Tech Event	Event coordination feedback	Start Survey
310	University Class Environment	for FYP needed	Start Survey

Your Survey History		
ID	Survey Title	Submitted On
302	Online Education Standards	03/05/2026

TakeSurvey.aspx

```

<%@ Page Language="VB" AutoEventWireup="false" CodeFile="TakeSurvey.aspx.vb"
Inherits="TakeSurvey" %>
<!DOCTYPE html>
<html>
<head runat="server">
  <title>Take Survey</title>
  <link href="style.css" rel="stylesheet" />
</head>
<body style="background-color: #fce4ec;">
  <form id="form1" runat="server">
    <div class="survey-title-bar">
      ANALYZING: <asp:Label ID="lblSurveyTitle" runat="server"></asp:Label>
    </div>

    <div class="main-content" style="max-width: 800px; margin: auto;">
      <asp:Repeater ID="rptQuestions" runat="server"
OnItemDataBound="rptQuestions_ItemDataBound">
        <ItemTemplate>
          <div class="question-box">
            <h4 style="color:#4a148c;">Q: <%# Eval("QuestionText") %></h4>

```

```

        <asp:HiddenField ID="hdnQuestionID" runat="server" Value='<%#
Eval("QuestionID") %>' />
        <asp:HiddenField ID="hdnType" runat="server" Value='<%#
Eval("QuestionType") %>' />

        <!-- For MCQ -->
        <asp:RadioButtonList ID="rblOptions" runat="server" CssClass="opt-list"
DataTextField="OptionText" DataValueField="OptionID" Visible="false"></asp:RadioButtonList>

        <!-- For Short Answer -->
        <asp:TextBox ID="txtAnswer" runat="server" CssClass="login-input"
TextMode="MultiLine" Rows="2" placeholder="Write your answer here..." Visible="false"
Width="100%"></asp:TextBox>
    </div>
</ItemTemplate>
</asp:Repeater>

    <asp:Button ID="btnSubmitSurvey" runat="server" Text="Submit My Survey"
CssClass="btn-login" style="background:#4caf50; height:50px; font-size:18px;" />
    <asp:Button ID="btnBack" runat="server" Text="Cancel" OnClick="btnBack_Click"
CssClass="btn-login" style="background:#9e9e9e; height:50px; font-size:18px;
margin-top:10px;" />
    <br /><br />
</div>
</form>
</body>
</html>

```

[TakeSurvey.aspx.vb](#)

```

Imports System.Data
Imports System.Data.SqlClient
Imports System.Data
Imports System.Data.SqlClient

```

```

Partial Class TakeSurvey
    Inherits System.Web.UI.Page

```

```

    Dim connStr As String =
ConfigurationManager.ConnectionStrings("SurveyDBConn").ConnectionString

```

```

Protected Sub Page_Load(sender As Object, e As EventArgs) Handles Me.Load
    If Not IsPostBack Then

```

```

        If Session("ActiveSurveyID") Is Nothing Then Response.Redirect("Surveyor.aspx")
        LoadQuestions()
    End If
End Sub

Sub LoadQuestions()
    Using conn As New SqlConnection(connStr)
        Dim cmdTitle As New SqlCommand("SELECT Title FROM Survey WHERE
SurveyID=@sid", conn)
        cmdTitle.Parameters.AddWithValue("@sid", Session("ActiveSurveyID"))
        conn.Open()
        lblSurveyTitle.Text = cmdTitle.ExecuteScalar().ToString()

        Dim cmdQ As New SqlDataAdapter("SELECT * FROM Question WHERE
SurveyID=@sid ORDER BY DisplayOrder", conn)
        cmdQ.SelectCommand.Parameters.AddWithValue("@sid", Session("ActiveSurveyID"))
        Dim dt As New DataTable()
        cmdQ.Fill(dt)
        rptQuestions.DataSource = dt
        rptQuestions.DataBind()
    End Using
End Sub

Protected Sub rptQuestions_ItemDataBound(sender As Object, e As
RepeaterItemEventArgs)
    If e.Item.ItemType = ListItemType.Item Or e.Item.ItemType = ListItemType.AlternatingItem
Then
        Dim qid As String = DataBinder.Eval(e.Item.DataItem, "QuestionID").ToString()
        Dim type As String = DataBinder.Eval(e.Item.DataItem, "QuestionType").ToString()

        Dim rbl As RadioButtonList = CType(e.Item.FindControl("rblOptions"), RadioButtonList)
        Dim txt As TextBox = CType(e.Item.FindControl("txtAnswer"), TextBox)

        If type = "MCQ" Then
            rbl.Visible = True
            Using conn As New SqlConnection(connStr)
                Dim cmd As New SqlDataAdapter("SELECT OptionID, OptionText FROM Options
WHERE QuestionID=@qid", conn)
                cmd.SelectCommand.Parameters.AddWithValue("@qid", qid)
                Dim dt As New DataTable()
                cmd.Fill(dt)
                rbl.DataSource = dt
                rbl.DataBind()
            End Using
        End If
    End If
End Sub

```

```

Else
    txt.Visible = True
End If
End If
End Sub

```

```

Protected Sub btnSubmitSurvey_Click(sender As Object, e As EventArgs) Handles
btnSubmitSurvey.Click

```

```

    For Each item As RepeaterItem In rptQuestions.Items
        Dim type As String = CType(item.FindControl("hdnType"), HiddenField).Value

        If type = "MCQ" Then
            Dim rbl As RadioButtonList = CType(item.FindControl("rblOptions"), RadioButtonList)
            If rbl.SelectedIndex = -1 Then
                Response.Write("<script>alert('Please answer all questions before
submitting!');</script>")
                Return
            End If
        Else
            Dim txtAns As TextBox = CType(item.FindControl("txtAnswer"), TextBox)
            If String.IsNullOrEmpty(txtAns.Text) Then
                Response.Write("<script>alert('Please answer all questions before
submitting!');</script>")
                Return
            End If
        End If
    Next

```

```

Using conn As New SqlConnection(connStr)
    conn.Open()

```

```

        Dim respID As Integer = Convert.ToInt32(New SqlCommand("SELECT
ISNULL(MAX(ResponseID), 0) + 1 FROM Response", conn).ExecuteScalar())
        Dim cmdResp As New SqlCommand("INSERT INTO Response (ResponseID, SurveyID,
UserID, SubmissionDate) VALUES (@rid, @sid, @uid, GETDATE())", conn)
        cmdResp.Parameters.AddWithValue("@rid", respID)
        cmdResp.Parameters.AddWithValue("@sid", Session("ActiveSurveyID"))
        cmdResp.Parameters.AddWithValue("@uid", Session("UserID"))
        cmdResp.ExecuteNonQuery()

```

```

    For Each item As RepeaterItem In rptQuestions.Items

```

```

Dim qid As String = CType(item.FindControl("hdnQuestionID"), HiddenField).Value
Dim type As String = CType(item.FindControl("hdnType"), HiddenField).Value

Dim aidCmd As New SqlCommand("SELECT ISNULL(MAX(AnswerID), 0) + 1 FROM
Response_Answer", conn)
Dim aid As Integer = Convert.ToInt32(aidCmd.ExecuteScalar())

Dim cmdAns As New SqlCommand("INSERT INTO Response_Answer (AnswerID,
ResponseID, QuestionID, OptionID, TextAnswer) VALUES (@aid, @rid, @qid, @oid, @txt)",
conn)
cmdAns.Parameters.AddWithValue("@aid", aid)
cmdAns.Parameters.AddWithValue("@rid", respID)
cmdAns.Parameters.AddWithValue("@qid", qid)

If type = "MCQ" Then
    Dim rbl As RadioButtonList = CType(item.FindControl("rblOptions"), RadioButtonList)
    cmdAns.Parameters.AddWithValue("@oid", rbl.SelectedValue)
    cmdAns.Parameters.AddWithValue("@txt", DBNull.Value)
Else
    Dim txtAns As TextBox = CType(item.FindControl("txtAnswer"), TextBox)
    cmdAns.Parameters.AddWithValue("@oid", DBNull.Value)
    cmdAns.Parameters.AddWithValue("@txt", txtAns.Text.Trim())
End If
cmdAns.ExecuteNonQuery()
Next
End Using

' Success Message
Response.Write("<script>alert('Thank you! Your response has been submitted.');

```

Q: Do you have a quiet workspace?

Yes, very quiet
 Sometimes noisy
 No, constant distractions

Q: Rate your internet speed.

High Speed (Fiber)
 Average (DSL/4G)
 Poor (Frequent lag)

Q: Hours worked per day?

Less than 6 hours
 8-10 hours
 More than 10 hours

Q: Do you feel isolated?

Builder.aspx

```
<%@ Page Language="VB" AutoEventWireup="false" CodeFile="Builder.aspx.vb"
Inherits="Builder" %>
<!DOCTYPE html>
<html>
<head runat="server">
  <title>Builder Dashboard - Survey System</title>
  <link href="style.css" rel="stylesheet" />
</head>
<body>
  <form id="form1" runat="server">
    <div class="builder-header">BUILDER CONTROL PANEL</div>

    <div class="sidebar">
      <asp:LinkButton ID="lnkDashboard" runat="server" OnClick="ShowDashboard">My
Stats</asp:LinkButton>
      <asp:LinkButton ID="lnkMySurveys" runat="server" OnClick="ShowMySurveys">My
Surveys</asp:LinkButton>
      <asp:LinkButton ID="btnLogout" runat="server" CssClass="logout"
OnClick="btnLogout_Click">Logout</asp:LinkButton>
    </div>

    <div class="main-content">
      <asp:Label ID="lblGlobalMsg" runat="server"></asp:Label>

      <asp:MultiView ID="BuilderMultiView" runat="server" ActiveViewIndex="0">
```

```

<!-- Dashboard Stats View -->
<asp:View ID="ViewStats" runat="server">
  <div class="stats-container">
    <div class="stat-card">
      <h2>My Total Surveys</h2>
      <asp:Label ID="lblMySurveysCount" runat="server"
Font-Size="XX-Large">0</asp:Label>
    </div>
    <div class="stat-card" style="background:#e91e63;">
      <h2>Total Responses</h2>
      <asp:Label ID="lblMyResponsesCount" runat="server"
Font-Size="XX-Large">0</asp:Label>
    </div>
  </div>
</asp:View>

<!-- My Surveys View -->
<asp:View ID="ViewMySurveys" runat="server">
  <div class="grid-title">Surveys Assigned to Me</div>
  <asp:GridView ID="gvMySurveys" runat="server" CssClass="report-grid"
AutoGenerateColumns="False" DataKeyNames="SurveyID" Width="100%"
OnRowCommand="gvMySurveys_RowCommand">
  <Columns>
    <asp:BoundField DataField="SurveyID" HeaderText="ID" />
    <asp:BoundField DataField="Title" HeaderText="Survey Title" />
    <asp:BoundField DataField="Status" HeaderText="Current Status" />
    <asp:BoundField DataField="CreatedAt" HeaderText="Date Created"
DataFormatString="{0:dd/MM/yyyy}" />
    <asp:TemplateField HeaderText="Actions">
      <ItemTemplate>
        <asp:Button ID="btnManage" runat="server" Text="Add Questions"
CommandName="Manage" CommandArgument='<%=# Eval("SurveyID") %>'
CssClass="btn-login" style="width:130px; background:#673ab7;" />
        <asp:Button ID="btnPublish" runat="server" Text="Publish"
CommandName="Publish" CommandArgument='<%=# Eval("SurveyID") %>'
CssClass="btn-login" style="width:80px; background:#2e7d32;" Visible='<%=#
Eval("Status").ToString() = "Draft" %>' OnClientClick="return confirm('Publish this survey?
Builders cannot edit questions after publishing.');" />
      </ItemTemplate>
    </asp:TemplateField>
  </Columns>
</asp:GridView>
</asp:View>

```

```

<!-- Manage Questions View -->
<asp:View ID="ViewManageQuestions" runat="server">
  <div class="manage-card">
    <h3 style="color:#4a148c;">Add Question to: <asp:Label
ID="lblSelectedSurveyTitle" runat="server" Font-Bold="true"></asp:Label></h3>
    <asp:HiddenField ID="hfSelectedSurveyID" runat="server" />

    <div style="margin-bottom:10px;">
      <asp:TextBox ID="txtQuestionText" runat="server" placeholder="Enter
Question text here..." CssClass="login-input" Width="100%"></asp:TextBox>
    </div>
    <div style="margin-bottom:10px;">
      <label style="font-size:12px; color:#666;">Options (Comma separated for
MCQ, leave blank for Short Answer):</label>
      <asp:TextBox ID="txtOptions" runat="server" placeholder="Example: Option 1,
Option 2, Option 3" CssClass="login-input" Width="100%"></asp:TextBox>
    </div>
    <asp:Button ID="btnAddQuestion" runat="server" Text="Save Question"
OnClick="btnAddQuestion_Click" CssClass="btn-login" style="width:150px;" />
    <asp:Button ID="btnCancel" runat="server" Text="Back to List"
OnClick="ShowMySurveys" CssClass="btn-login" style="width:120px; background:#757575;" />
  </div>

  <div class="grid-title">Questions in this Survey</div>
  <asp:GridView ID="gvQuestions" runat="server" CssClass="report-grid"
AutoGenerateColumns="False" DataKeyNames="QuestionID" Width="100%"
OnRowDeleting="gvQuestions_RowDeleting">
    <Columns>
      <asp:BoundField DataField="QuestionText" HeaderText="Question" />
      <asp:BoundField DataField="QuestionType" HeaderText="Type" />
      <asp:TemplateField HeaderText="Actions">
        <ItemTemplate>
          <asp:LinkButton ID="lnkDelete" runat="server" CommandName="Delete"
Text="Remove" ForeColor="Red" OnClientClick="return confirm('Delete this
question?');"></asp:LinkButton>
        </ItemTemplate>
      </asp:TemplateField>
    </Columns>
  </asp:GridView>
</asp:View>

</asp:MultiView>
</div>

```

```
</form>
</body>
</html>
```

Builder.[aspx.vb](#)

```
Imports System.Data
Imports System.Data.SqlClient
```

```
Partial Class Builder
    Inherits System.Web.UI.Page
```

```
    Dim connStr As String =
    ConfigurationManager.ConnectionStrings("SurveyDBConn").ConnectionString
```

```
    Protected Sub Page_Load(sender As Object, e As EventArgs) Handles Me.Load
        If Session("Role") Is Nothing OrElse Session("Role").ToString() <> "Builder" Then
            Response.Redirect("Login.aspx")
        End If
```

```
        If Not IsPostBack Then
            LoadMyStats()
        End If
    End Sub
```

```
    Sub ShowMsg(text As String, isError As Boolean)
        lblGlobalMsg.Text = text
        lblGlobalMsg.CssClass = If(isError, "error-msg", "success-msg")
    End Sub
```

```
    Sub LoadMyStats()
        Using conn As New SqlConnection(connStr)
            Try
                conn.Open()
                Dim builderID As String = Session("UserID").ToString()
                Dim cmdSurveys As New SqlCommand("SELECT COUNT(*) FROM Survey WHERE
CreatedByUserID=@uid", conn)
                cmdSurveys.Parameters.AddWithValue("@uid", builderID)
                lblMySurveysCount.Text = cmdSurveys.ExecuteScalar().ToString()

                Dim respQuery As String = "SELECT COUNT(*) FROM Response R JOIN Survey S
ON R.SurveyID = S.SurveyID WHERE S.CreatedByUserID=@uid"
                Dim cmdResponses As New SqlCommand(respQuery, conn)
                cmdResponses.Parameters.AddWithValue("@uid", builderID)
```

```
        lblMyResponsesCount.Text = cmdResponses.ExecuteScalar().ToString()
    Catch ex As Exception
    End Try
End Using
End Sub
```

```
Protected Sub ShowDashboard(s As Object, e As EventArgs)
    BuilderMultiView.ActiveViewIndex = 0
    LoadMyStats()
End Sub
```

```
Protected Sub ShowMySurveys(s As Object, e As EventArgs)
    BuilderMultiView.ActiveViewIndex = 1
    LoadMySurveysGrid()
End Sub
```

```
Sub LoadMySurveysGrid()
    Using conn As New SqlConnection(connStr)
        Dim query As String = "SELECT SurveyID, Title, Description, Status, CreatedAt FROM
Survey WHERE CreatedByUserID=@uid"
        Dim cmd As New SqlCommand(query, conn)
        cmd.Parameters.AddWithValue("@uid", Session("UserID"))
        Dim da As New SqlDataAdapter(cmd)
        Dim dt As New DataTable()
        da.Fill(dt)
        gvMySurveys.DataSource = dt
        gvMySurveys.DataBind()
    End Using
End Sub
```

' --- Question Management & Publish Handling ---

```
Protected Sub gvMySurveys_RowCommand(sender As Object, e As
GridViewCommandEventArgs)
    Dim surveyID As Integer = Convert.ToInt32(e.CommandArgument)

    If e.CommandName = "Manage" Then
        hfSelectedSurveyID.Value = surveyID.ToString()
        BuilderMultiView.ActiveViewIndex = 2
        LoadSurveyDetails(surveyID)
        LoadQuestions(surveyID)
    ElseIf e.CommandName = "Publish" Then
        UpdateSurveyStatus(surveyID, "Published")
    End If
End Sub
```

```

Sub LoadSurveyDetails(sid As Integer)
    Using conn As New SqlConnection(connStr)
        Dim cmd As New SqlCommand("SELECT Title FROM Survey WHERE SurveyID=@id",
conn)
        cmd.Parameters.AddWithValue("@id", sid)
        conn.Open()
        lblSelectedSurveyTitle.Text = cmd.ExecuteScalar().ToString()
    End Using
End Sub

```

```

Sub LoadQuestions(sid As Integer)
    Using conn As New SqlConnection(connStr)
        Dim cmd As New SqlCommand("SELECT QuestionID, QuestionText, QuestionType
FROM Question WHERE SurveyID=@sid", conn)
        cmd.Parameters.AddWithValue("@sid", sid)
        Dim da As New SqlDataAdapter(cmd)
        Dim dt As New DataTable()
        da.Fill(dt)
        gvQuestions.DataSource = dt
        gvQuestions.DataBind()
    End Using
End Sub

```

```

Protected Sub btnAddQuestion_Click(sender As Object, e As EventArgs)
    If String.IsNullOrEmpty(txtQuestionText.Text) Then
        ShowMsg("Question text is required!", True)
        Return
    End If

```

```

    Using conn As New SqlConnection(connStr)
        Try
            conn.Open()
            ' 1. Duplicate Check
            ' '=' ki jagah 'LIKE' use karein taaki TEXT data type compare ho sakay
            Dim checkCmd = New SqlCommand("SELECT COUNT(*) FROM Question WHERE
SurveyID=@sid AND QuestionText LIKE @txt", conn)
            checkCmd.Parameters.AddWithValue("@sid", hfSelectedSurveyID.Value)
            checkCmd.Parameters.AddWithValue("@txt", txtQuestionText.Text.Trim())

            If Convert.ToInt32(checkCmd.ExecuteScalar()) > 0 Then
                ShowMsg("This question already exists in this survey!", True)
                Return
            End If

```

```

' 2. Insert Question
Dim nextQID = Convert.ToInt32(New SqlCommand("SELECT
ISNULL(MAX(QuestionID), 0) + 1 FROM Question", conn).ExecuteScalar())
Dim qType As String = If(String.IsNullOrEmpty(txtOptions.Text), "Short Answer",
"MCQ")

Dim cmdQ As New SqlCommand("INSERT INTO Question (QuestionID, SurveyID,
QuestionText, QuestionType) VALUES (@qid, @sid, @txt, @type)", conn)
cmdQ.Parameters.AddWithValue("@qid", nextQID)
cmdQ.Parameters.AddWithValue("@sid", hfSelectedSurveyID.Value)
cmdQ.Parameters.AddWithValue("@txt", txtQuestionText.Text.Trim())
cmdQ.Parameters.AddWithValue("@type", qType)
cmdQ.ExecuteNonQuery()

' 3. Options Handling
If qType = "MCQ" Then
Dim opts As String() = txtOptions.Text.Split(",")
For Each o As String In opts
If Not String.IsNullOrEmpty(o) Then
Dim nextOID = Convert.ToInt32(New SqlCommand("SELECT
ISNULL(MAX(OptionID), 0) + 1 FROM Options", conn).ExecuteScalar())
Dim cmdO As New SqlCommand("INSERT INTO Options (OptionID,
QuestionID, OptionText) VALUES (@oid, @qid, @otxt)", conn)
cmdO.Parameters.AddWithValue("@oid", nextOID)
cmdO.Parameters.AddWithValue("@qid", nextQID)
cmdO.Parameters.AddWithValue("@otxt", o.Trim())
cmdO.ExecuteNonQuery()
End If
Next
End If

ShowMsg("Question added successfully!", False)
txtQuestionText.Text = "" : txtOptions.Text = ""
LoadQuestions(Convert.ToInt32(hfSelectedSurveyID.Value))
Catch ex As Exception
ShowMsg("Error: " & ex.Message, True)
End Try
End Using
End Sub

```

```

Protected Sub gvQuestions_RowDeleting(sender As Object, e As GridViewDeleteEventArgs)
Dim qid As Integer = Convert.ToInt32(gvQuestions.DataKeys(e.RowIndex).Value)

```

```

Using conn As New SqlConnection(connStr)
    conn.Open()
    ' Transaction use kar rahe hain taaki agar ek jagah error aaye to kuch bhi delete na ho
    Dim trans As SqlTransaction = conn.BeginTransaction()

    Try
        ' Step 1: Pehle Response_Answer table se is question ke saaray answers delete
        karein
        Dim cmdAnswers As New SqlCommand("DELETE FROM Response_Answer
        WHERE QuestionID=@id", conn, trans)
        cmdAnswers.Parameters.AddWithValue("@id", qid)
        cmdAnswers.ExecuteNonQuery()

        ' Step 2: Phir Options table se is question ke options delete karein (Cascade na ho to
        zaroori hai)
        Dim cmdOptions As New SqlCommand("DELETE FROM Options WHERE
        QuestionID=@id", conn, trans)
        cmdOptions.Parameters.AddWithValue("@id", qid)
        cmdOptions.ExecuteNonQuery()

        ' Step 3: Ab aakhir mein Question delete karein
        Dim cmdQ As New SqlCommand("DELETE FROM Question WHERE
        QuestionID=@id", conn, trans)
        cmdQ.Parameters.AddWithValue("@id", qid)
        cmdQ.ExecuteNonQuery()

        trans.Commit()
        ShowMsg("Question and its related responses deleted successfully.", False)

    Catch ex As Exception
        trans.Rollback()
        ShowMsg("Delete Error: " & ex.Message, True)
    End Try
End Using

' Grid ko refresh karein
LoadQuestions(Convert.ToInt32(hfSelectedSurveyID.Value))
End Sub

Sub UpdateSurveyStatus(sid As Integer, status As String)
    Using conn As New SqlConnection(connStr)
        conn.Open()
        Dim cmd As New SqlCommand("UPDATE Survey SET Status=@s WHERE
        SurveyID=@id", conn)

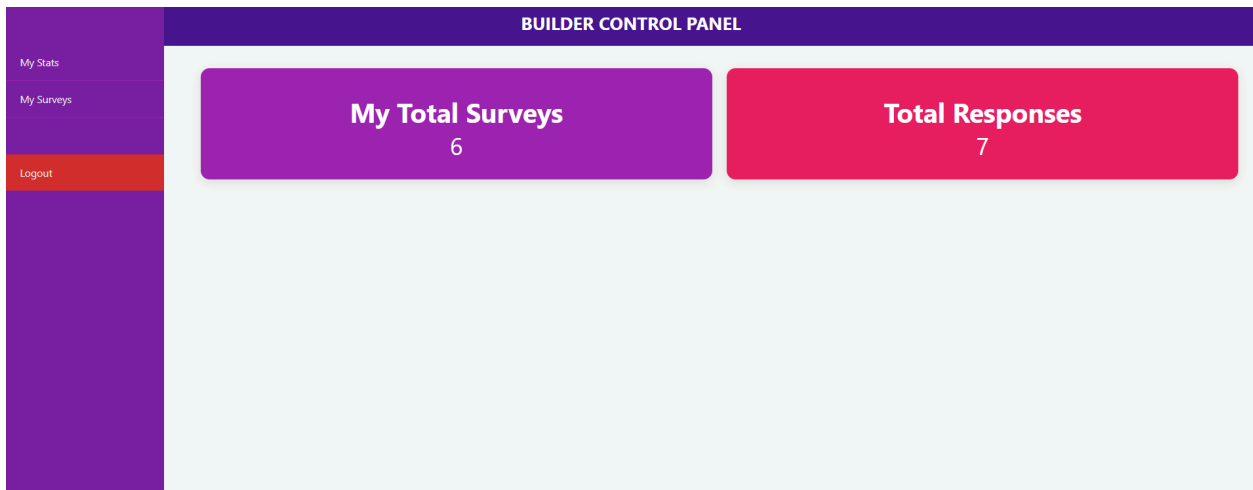
```

```

        cmd.Parameters.AddWithValue("@s", status)
        cmd.Parameters.AddWithValue("@id", sid)
        cmd.ExecuteNonQuery()
        ShowMsg("Survey " & status & " successfully!", False)
        LoadMySurveysGrid()
    End Using
End Sub

Protected Sub btnLogout_Click(sender As Object, e As EventArgs)
    Session.Abandon()
    Response.Redirect("Login.aspx")
End Sub
End Class

```



Style.css file:

```

/* General Body Settings */
body {
    font-family: 'Segoe UI', Tahoma, Geneva, Verdana, sans-serif;
    background-color: #f4f7f6;
    margin: 0;
    padding: 0;
}

```

```

/* Login Card Styling */
.login-card {
    width: 350px;
    margin: 100px auto;
    background: white;
}

```

```
border-radius: 10px;
box-shadow: 0px 10px 25px rgba(0,0,0,0.1);
overflow: hidden;
}

.login-header {
background: #4a148c;
color: white;
padding: 20px;
text-align: center;
font-size: 20px;
font-weight: bold;
}

/* Form Inputs */
.login-input {
width: 100%;
padding: 12px;
margin: 10px 0;
border: 1px solid #ddd;
border-radius: 5px;
box-sizing: border-box;
display: block;
}

.btn-login {
background: #e91e63;
color: white;
border: none;
padding: 12px;
border-radius: 5px;
cursor: pointer;
font-weight: bold;
transition: 0.3s;
}

.btn-login:hover {
background: #c2185b;
}

/* Layout for Admin & Builder , surveyor Panels */
.admin-header, .builder-header .survey-header {
background: #4a148c;
color: white;
```

```
padding: 15px;
text-align: center;
font-size: 22px;
font-weight: bold;
}

.sidebar {
width: 200px;
background: #311b92;
height: 100vh;
position: fixed;
padding-top: 20px;
}

.sidebar a {
padding: 15px;
text-decoration: none;
color: #f3e5f5;
display: block;
transition: 0.3s;
}

.sidebar a:hover {
background: #4a148c;
padding-left: 25px;
}

.sidebar .logout {
color: #ff8a80;
margin-top: 50px;
}

.main-content {
margin-left: 220px;
padding: 30px;
}

/* Stats Cards */
.stats-container {
display: flex;
gap: 20px;
margin-bottom: 30px;
}
```

```
.stat-card {
  flex: 1;
  padding: 25px;
  text-align: center;
  border-radius: 12px;
  background: #9c27b0;
  color: white;
  box-shadow: 0 4px 15px rgba(0,0,0,0.1);
}
```

```
/* Management Cards (Pink Area) */
```

```
.card-pink {
  background: #9c27b0;
  padding: 20px;
  border-radius: 10px;
  margin-bottom: 20px;
  color: white;
}
```

```
/* GridView / Tables Styling */
```

```
.report-grid {
  width: 100%;
  border-collapse: collapse;
  background: white;
  margin-top: 20px;
}
```

```
.report-grid th {
  background: #4a148c;
  color: white;
  padding: 12px;
  text-align: left;
}
```

```
.report-grid td {
  padding: 12px;
  border-bottom: 1px solid #ddd;
}
```

```
.report-grid tr:hover {
  background-color: #f1f1f1;
}
```

```
/* Messages */
```

```
.error-msg {
  color: #d32f2f;
  font-weight: bold;
  padding: 10px;
  background: #ffcdd2;
  border-radius: 5px;
  display: block;
}

.success-msg {
  color: #388e3c;
  font-weight: bold;
  padding: 10px;
  background: #c8e6c9;
  border-radius: 5px;
  display: block;
}

/* Surveyor Specific */
.welcome-bar {
  background: #f3e5f5;
  padding: 10px 20px;
  color: #4a148c;
  font-weight: bold;
  border-bottom: 2px solid #9c27b0;
}

.question-box {
  background: white;
  padding: 20px;
  border-radius: 10px;
  border-left: 5px solid #e91e63;
  margin-bottom: 20px;
  box-shadow: 0 2px 10px rgba(0,0,0,0.1);
}

survey-title-bar {
  background: #4a148c;
  color: white;
  padding: 15px 20px;
  font-size: 20px;
  font-weight: bold;
  text-align: center;
}
```

```
text-transform: uppercase;  
box-shadow: 0 2px 5px rgba(0,0,0,0.1);  
margin-bottom: 25px;  
}
```